

## OFFICERS:

### President:

**Dawn Myers**

myers1715@roadrunner.com  
843-917-0205

### Vice President:

**Beth Twedell**

843-326-1627  
sewunique4u@bellsouth.net

### Secretary:

**Theresa Maddox**

931-510-8151  
redhensr@yahoo.com

### Treasurer:

**Martha Herbert**

843-669-8615  
pudcat@bellsouth.net

## INSIDE THIS ISSUE:

Note from your  
President 1

Monthly Meeting  
Presentations 1

Chairpersons 2015 1

Block of the Month 2

Quilt Shows and Dates 2

Membership News 2

February 2015 Minutes 3

Treasurer's Report 3

Mystery Quilt 4

Recipe 4

Quilt History 4



Free Easter Patterns at:  
<http://www.all-about-quilts.com/easter-quilts.html>

# Swamp Fox Quilters



VOLUME 35 - ISSUE 3

MARCH 2015

## A Note from your President...

Spring is arriving and we're all happy about that! I have much to do in the yard and equally as much to accomplish in my sewing room. My entry for this year's challenge, Black and White Plus One, is nearing completion. Are you working on yours? Remember that finished pieces are due at the May meeting. I am looking forward to seeing what your creative minds have produced!

Early reports indicate that the Reenactment was a great success this year. Special thanks and congratulations to Tish Von Hagel and all others who participated in this endeavor. Come to the April meeting for the announcement of the final results of our ticket sales and silent auction. You will be pleased!

As always, thank you for all that you do to maintain and promote Swamp Fox Quilters!  
~Dawn



Quilt made by Leah M.

## Monthly Meeting Presentations

**April 2, 2015 9:30am** - Program by Annette Bowman, After the meeting there will be a class "What a nine patch can do for you" taught by Anita Bowman. Contact Beth Twedell for sign up and material sheet.

**May 7, 2015 9:30am** - Sew In - Work on charity quilts or pillowcases or bring your own project. There will be a potluck lunch after the May meeting. A sign up sheet will be passed around in advance for the potluck lunch.

**June 4, 2015 10:00am** - Presentation of the 2015 Challenge quilts at the Hartsville at the museum with lunch to follow at the country club.

**August 6, 2015 9:30am** - Presentation and class by Candice Hassen "A trip around the world."

### REMEMBER TO BRING THE FOLLOWING:

- ☐ Name Tag
- ☐ Paper for Taking Notes
- ☐ Show and Tell
- ☐ Block of the Month
- ☐ \$1 for the Library Fund
- ☐ Camera

## Chairpersons for 2015

**2015 Challenge :** Susan Rayment

**2016 Challenge:** Martha Herbert, Joan Goodsell

**2015 Opportunity Quilt:** Elaine Tanner

**2016 Opportunity Quilt:** Rita Studdard & Team

**Block of the Month:** Joan Goodsell

**Civil War Re-enactment:** Tish Von Hagel

**Community Service:** Elaine Holmes

**Correspondence:** Sara Simons

**Historian:** Naomi Narita

**Library:** Bonnie Marsee

**Membership:** Rita Studdard

**Newsletter and Website:** Leah Malasky

**Public Relations:** Lorene Arnette

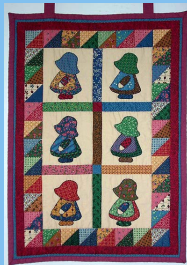
**QSC Liaison:** Frances Kelley

**Workday:** Wanda Moody



## Membership News

We have 3 additional members. Jan Davis and Alice Hulsey returning; and Lilia Miller, new member.



**Welcome!**

Squares in a Fat Quarter  
(18 x 22 inches)

2"	99
2.5"	56
3"	42
3.5"	30
4"	20
4.5"	16
5"	12
5.5"	12
6"	9
6.5"	6

Many thanks to Tish and her "crowd" for a great job done at the re-enactment. A whopping 546 tickets were sold over the 2 days. Members sold 688, for a total of 1234 tickets sold! Way to go SFQ!!



Quilt shown during the March meeting.

## Charm Quilts

People started making charm quilts in the 19th century. Charm quilts are usually made where no two squares or patches are cut from the same fabric. Sometimes they were called "beggar quilts", most likely because women would beg fabric from their friends and family to finish their quilts. Some charm quilts would occasionally have a duplicate of one fabric in order to give bed ridden children something to do while waiting to recover. Kind of like an old timey "Where's Waldo?".

Today, charms are usually thought of as pre-cut 5 inch squares from a fabric manufacturer and include a square of fabric from each material in a fabric line or collection. But a charm can be any size square and charm quilts are not limited to just square shaped patterns. The charms can be cut into different shapes, such as apple cores, tumblers, diamonds, or triangles.



For a more detailed and well-written history of charm quilts check out the article at [www.womenfolk.com/quilting\\_history/charm.htm](http://www.womenfolk.com/quilting_history/charm.htm)



Optional Bow Tie Quilt Layout found at [CrackerhouseQuilts.com](http://CrackerhouseQuilts.com)

## Quilt Shows and Dates to Remember

**March 21, 2015 - QSC Spring Meeting**  
A Charleston Tea Party  
Omar Shrine Temple ~ 176 Patriots Point Road ~ Mt. Pleasant, SC 29464  
<http://www.quiltersofsc.org/>

**May 28 - 31 2015**  
2015 N.C. Quilt Symposium Hosted by Western North Carolina Quilt Guild  
Bonclarken Conference Center, Flat Rock, NC - <http://www.ncqsi.org/>

**August 21-23, 2015 - A Celebration of Quilts** Electric City & Prickly Fingers Quilt Guild Show  
Anderson Civic Center, Anderson, SC  
<http://www.andersonscquilters.com/>

**October 16 & 17, 2015**  
CATAWBA VALLEY QUILT SHOW - Hickory Metro Convention Center, Hickory, NC  
[www.catawbavalleyquiltersguild.com](http://www.catawbavalleyquiltersguild.com)

## Block of the Month March 2015

**Theme:** Bow Tie

**Size:** 12 1/2 inches

**Colors:** White or off White and a bright color of your choice.

Neutral - Cut 2 squares 6 1/2 inches.  
Color—Cut 2 squares 6 1/2 inches and 2 squares 3 inches.



Draw a diagonal line on your 3 inch squares and sew to one corner of the neutral square. Trim and press toward the corner. Line up your squares as shown above and sew together.





## Minutes of the Meeting of Swamp Fox Quilters Guild



March 5, 2015

Meeting called to order. There were forty one members and 2 guests per Rita. Floor opened to corrections /additions to last month minutes. Carol Lindler reported that several important subjects were left out of last month minutes. To many to list. I did not get treasures report, because I was out of the room, but a full list of the treasurer's report was listed on the side next to the minutes.

**Challenge Quilt** - Susan Rayment reported Laura from Hartsville museum has changed her mind and members with quilts to hang in the museum need to have a photo of the quilt. Quilts to go to the museum will need to be brought to May meeting. Also if anyone is planning to go to the luncheon you need to bring \$14.00 cash to May meeting also.

**The reenactment** is the weekend of March 7-8, 2015. The drawing for the opportunity quilt will be held Sunday March 8, 2015. Tish VonHagel reported at the reenactment there will be vegetable soup on Sunday, not sure what will be on Saturday. Bring your own drink. Bring tickets for the drawing on Sunday.

**Work Day** - Wanda Moody reported the groups made up of experienced and new quilters, which is so the new members can learn more about quilting. One group has one quilt completed and several pillow cases were made on work day and several more turned in at this meeting.

Thank You Cards were read by Dawn from Joyce Hunckle and Mildred Hughes. They were very pleased with quilts.

Martha Herbert explained to new members about the guild dues and the extra \$5. for cancer research. Dues are \$15.

**QSC** - Frances Kelley explained you don't have to be a member of any guild or group to be a member of QSC Only requirement is you have to live in SC. QSC officers are elected every two years. Spring meeting is in Charleston SC this year. At the spring meeting you can meet the teachers and samples of what will be taught at the Fall meeting in October. Dues for QSC are \$20. per year. Frances has enrollment forms but check the address on the form because the old forms have wrong address on them.

**Lewis and Clark Quilt** - It was decided that the Lewis and Clark quilt that was donated will be raffled off ( June Jenkins suggested silent auction) at the reenactment with starting bid \$250. and bids increments of \$10. was decided. The money received for the Lewis and Clark quilt will go to the guild to use charity quilts. Beth Twedell made a motion that this will take place of the "Make it Bake it Grow it" this year." Second by Nancy Wright. Table selling tickets at the reenactment will oversee this quilt.

**Monthly Meetings** - Beth reported on the upcoming monthly meetings. See details on page one.

**Block of the Month** - Elaine Holmes win the BOM. Next month will be Bowtie block.

**Library Drawing** - Ann Nesmith won the Library drawing.

**Chairperson Update** - Lorene Arnette will take the role of Public Relations.

**Community Outreach** - The Naomi House needs a quilt for a boy and that will complete the need at this time. Dawn will get in touch with Joyce and get the quilts we have. Discussion about dollar amount set for charity quilts of \$500. Martha stated she had received one ticket for \$21.98. It was brought up the need for a quilter to quilt the charity quilts.

Ray Vance won the "needle holder" that was donated by Romona Eggleston.

Dawn announced Quilt show news; one in Charlotte NC and one The Horry Co. Quilt Gala in Myrtle Beach.

Karen Kirkland won first place with Log Cabin quilt and third place for large bed quilt. Congratulations to Karen!

**Show and Tell** - 14 people participated in Show and Tell

Dawn showed two quilts. Pat Couch showed quilt she bought in Connecticut. The back was feed sacks and small Sun Bonnet Sue quilt. Karen Kirkland showed two quilts. Carol Lindler showed pillow several cases. Carrie Agans showed small quilt of bear claw and prairie points in the boarder. Lorene Arnette showed baby bonnet. Harriett Whitlock showed one quilt. Elaine Holmes showed 2 panels of "the Civil War ending" to be sold at reenactment. Joan showed two quilts. Nancy Wright had several pillow cases. Ray Vance showed, I believe 14 quilts which three were charity quilts. Jacki Johnson showed two charity quilts. Lela Miller showed a beautiful 30 year old Cathedral window quilt. Ed showed pillow cases and a "cat" quilt for his daughter's birthday. Meeting adjourned and turned over to Lynn Buski.

Happy Quilting ~Submitted by Theresa Maddox. Edited for space by Leah M.

### TREASURER'S REPORT

**Starting Balance - Feb '15**      **\$ 3635.76**

#### Credits

Library	\$8.00
Name Tags	\$1.25
Fons and Porter	\$30.00
Breast Cancer Fund	\$5.00
Memberships	\$45.00
Opportunity Quilt Proceeds	\$1020.00
Class Fees	\$270.00
Picture	\$25.00
2 Wall Hangings	\$80.00
Lewis and Clark Quilt	\$425.00

#### Debits

Class Balance (Agans)	\$130.00
Class (Buske)	\$643.00
2016 Opp. Quilt Materials	\$161.87
Naomi project expenses	\$21.98
Photos	19.88

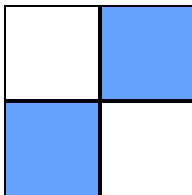
**Ending Balance**      **\$4568.28**



Quilt shown during March meeting.

## 2015 Newsletter Mystery Quilt - Clue #3

This month's mystery clue has us making simple Four Patches. This time we will use the neutral and blue fabrics. You will need **68 Four Patches** that measure  $3 \frac{7}{8}$  square.



### 4 Patch - Scrap Method

If you are using scraps to make your quilt you can follow these cutting instructions:



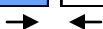
From your neutral fabrics, cut **136 squares** that measure **2 1/8 inches**.



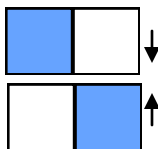
From your blue fabrics, cut **136 squares** that measure **2 1/8 inches**.



Sew a blue square to a neutral square to form a rectangle that measures  $3 \frac{7}{8} \times 2 \frac{1}{8}$  inches.



Sew two rectangles together with same colors opposite each other to form a four patch that measures  $3 \frac{7}{8} \times 3 \frac{7}{8}$ . Create 68 Four Patches.



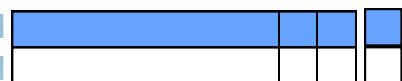
### 4 Patch - Strip Method

If you are using one fabric per color you can use the Strip Method to make your four patches.

From both your neutral fabric and your blue fabric, Cut 7 strips measuring  $2 \frac{1}{8} \times \text{WOF}$  (Width of Fabric)



Sew a blue strip to a neutral strip. You should now have 7 strips that measure  $3 \frac{7}{8} \times \text{WOF}$ .

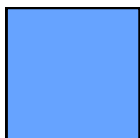


Sub cut these strips into 136 smaller rectangles that measure  $3 \frac{7}{8} \times 2 \frac{1}{8}$  inches.

Sew two rectangles together with same colors opposite each other to form a four patch that measures  $3 \frac{7}{8} \times 3 \frac{7}{8}$



This should give you 68 blue and neutral 4 patches.



The final step for clue three is to cut **17 squares** from your blue fabrics that measure  $3 \frac{7}{8} \times 3 \frac{7}{8}$  inches. Set these aside for a future clue.



Cathedral windows quilt shown during the March meeting.

## Pistachio Cake

### Ingredients:

- 1 (18.25 ounce) package yellow cake mix
- 1 (3.4 ounce) package instant pistachio pudding mix
- 4 eggs
- 1 1/2 cups water
- 1/4 cup vegetable oil
- 1/2 teaspoon almond extract
- 7 drops green food coloring



Recipe from Allrecipes.com

### Directions:

1. Preheat oven to 350 degrees F (175 degrees C). Grease and flour a 10 inch tube pan.
2. In a large bowl mix together cake mix and pudding mix. Make a well in the center and pour in eggs, water, oil, almond extract and green food coloring. Blend ingredients, then beat for 2 minutes at medium speed.
3. Pour into prepared 10 inch tube pan. Bake in the preheated oven for 50 to 55 minutes, or until cake springs back when lightly pressed. Cool in pan 15 minutes. Turn out onto a wire rack and cool completely.



Quilt shown during the March meeting.

## Quilt Block History Time Line

Highlights of famous quilt patterns in American history:

- 1800---Nine Patch pattern appears.
- 1806---Irish Chain known, maybe the first use of a block pattern as the overall quilt design.
- 1810--1830---Log Cabin pattern developed.
- 1812---Increase of patriotic-themed quilts.
- 1834--1859---Dresden Plate, Lemoyne Star patterns known.
- 1870---Crazy Quilt becomes popular.
- 1890---Double Wedding Ring introduced.
- 1929--1939---Sunbonnet Sue started.

Read more at <http://reddawn.net/quilt/timeline.htm>