

# Swamp Fox Quilters

We offer our many thanks to Dawn for her service as President for 2015. Photo: Beth Twedell presenting Dawn with her signed quilt blocks from the guild.



Here's to a great New Year!

## Officers:

President: Frances Kelley  
[FKelley321@bellsouth.net](mailto:FKelley321@bellsouth.net)  
 843-332-8020

Vice-President: Wanda Moody  
 843-665-2225

Secretary: Elaine Holmes  
[rwJE005@gmail.com](mailto:rwJE005@gmail.com)  
 843-629-0397

Treasurer: Timi Bronson  
[All-sewed-up@roadrunner.com](mailto:All-sewed-up@roadrunner.com)  
 860-908-3894

## Martha Update: Cards and Visits

Address: Martha Herbert  
 % Will Herbert  
 2430 Chadwick Drive  
 Florence, SC 29501

She is now at Honorage on Cashua Dr.



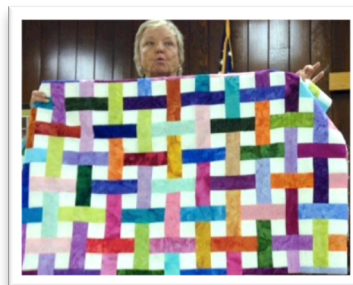
## A Note from your President

Well, I made it through my first meeting without being impeached. Thanks to all who took positions with SFQ for 2016. With the involvement of all our members working together, Quilting will be fun.

2016 has started with cold weather. It is time to stay inside and sew. Sandra Baker made hand sewing crazy quilts sound like a perfect winter project.

See you at workday for learning and playing.

Frances



Show and Tell: Frances Kelley, Ray Vance

"Let us love winter, for it is the spring of genius."

"Winter is a season of recovery and preparation."  
 --Paul Theroux



Quilts exhibited during the January Show and Tell: From left to right Karen Kirkland, Harry Sue Cockfield, Nancy Wright, Harriett Whitlock

## Monthly Meeting Presentations

**February 4, 2016 9:30 A.M.**

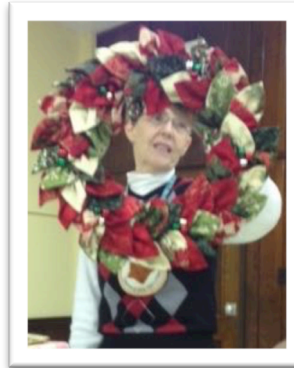
Jennifer Amor will be our guest speaker.  
<http://www.jenniferamor.com/>

**March 3, 2016 9:30 A.M.**

Susan Edmonson from Concord, NC, will present a program on fabric collage wall hangings. Her website is [susanedmonsondesigns.com](http://susanedmonsondesigns.com).

**April 7, 2016 9:30 A.M.**

Jane Garrison from Rock Hill will lecture on different types of threads and their uses. She will be bringing a variety of threads and yarns for sale.

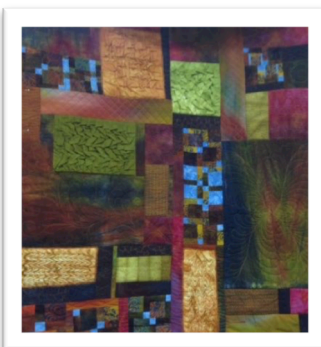


Ray Vance and June Jenkins showing the Christmas leaf wreaths made of fabric that are similar to the leaf wreath that Ramona Eggleston will be demonstrating during the March Workday. She will also have several techniques and ideas for us, including a spring floral wreath. We can all welcome spring with fabric blossoms on our doors and walls.

## Chairpersons for 2016

**2016 Challenge:** Joan Goodsell, Martha Herbert  
**2016 Opportunity Quilt:** Rita Studdard & Team  
**Block of the Month:** Lorene Arnette  
**Community Service:** Harry Sue Cockfield  
**Correspondence:** Sara Simons  
**Historian:** Naomi Narita  
**Library:** Bonnie Marsee/Pam Bishop  
**Membership:** Rita Studdard  
**Newsletter:** Harriett Whitlock  
**Website:** Leah Malasky  
**Public Relations:** Lorene Arnette  
**QSC Liaison:** Karen Kirkland  
**Workday:** Susan Rayment

The January meeting had a return visit from Sandra Baker. As pictured, she demonstrated her technique for making a crazy quilt pincushion from 2 CD's. Her afternoon class – enjoyed by many – continued the techniques of crazy quilting.

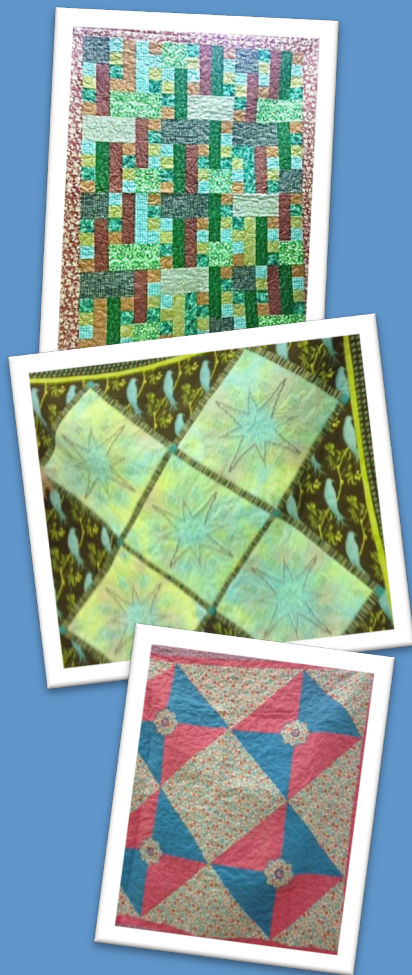


Art quilts shown: Timi Bronson and Ray Vance



### Quilt Shows and Dates to Remember:

Feb. 26-27, 2016- 2<sup>nd</sup> annual Quilt Gala presented by the Horry County Museum. 10 A.M.- 4 P.M. both days. Anyone may participate in the Gala by entering a quilt. This is not a judged or juried show; however, viewers' choice voting will take place.



**March 4-5, 2016**

"Low Country Threads" presented by Cobblestone Quilt Guild, Omar Shrine Temple, 176 Patriots Point St., Mt. Pleasant, SC

[www.cobblestonequilters.com](http://www.cobblestonequilters.com)

**March 18-20, 2016-** "Let the Good Times Roll in Sparkle City"—QSC Spring Meeting, Summit Pointe and Events Center, 805 Spartan Blvd., Spartanburg, SC

**Show and Tell:** Jonnie Britton, Jan Davis, Ray Vance

## Minutes of the Swamp Fox Guild Meeting January 7, 2016

President Frances Kelley called the meeting to order at 9:30 am. She called on Ray Vance to give an update on Martha Herbert. Martha is now at the Honorage Rehabilitation facility in Florence. Ray urged members to visit (try to limit stay to about 15 min.) Martha's room number is 9. Her mailing address remains the same c/o Will Herbert, 2430 Chadwick Dr. Florence 29501. Sara Simons informed members that Courtney Stukes's husband is quite ill and Judy Voss's husband is recovering from complications of surgery. She will send cards to both. Frances thanked Pam Bishop and her committee for making the December luncheon a success. She also announced that the theme for this year is "Fun in Quilting." Frances called on Beth Twedell to present signature blocks to past President Dawn Myers.

**Treasurer's Report:** Timi Bronson reported income \$747.25, expenses \$603.50 and current balance of \$5,230.07.

**Membership:** Rita Studdard reported 47 members present including 2 new members.

**Minutes of the November and December meetings were approved as presented.**

**Opportunity Quilt:** Rita reminded members that they should sell at least one pack of tickets. The quilt will be given away at the Re-enactment in March.

**Frances will announce the chairman of each committee as she calls for a report:**

**2016 Challenge:** Joan Goodsell urged members to begin work on their entry. Quilts are limited in size, no smaller than 60 inches or larger than 120 inches in circumference. Please include a wooden dowel for hanging.

**Re-enactment:** Tish Von Hagel announced the event is the weekend of march 12<sup>th</sup> and 13<sup>th</sup>. She will ask for volunteers to work at the event at a later meeting.

**Community Service:** Harry Sue Cockfield reported she has 3 quilts. Where quilts will be donated to be determined later.

**Public Relations:** Lorene Arnette agreed to continue to handle this task.

**Library:** Bonnie Marsee and Pam Bishop will continue to co-chair. Rita Nuckles won the drawing.

**Historian:** Naomi Narita will continue as Chairman.

**Newsletter:** Harriett Whitlock. Please have items for the newsletter to her within the first few days after the regular monthly meeting so that the newsletter can be received before Workday. [lgehmv@aol.com](mailto:lgehmv@aol.com)

**QSC:** Karen Kirkland reminded members the spring meeting will be in Spartanburg March 18 & 19. Dues for QSC are \$20.00 a year. For more information visit Quilters of South Carolina website.

**Workday:** Susan Rayment. She will continue the teaching theme. January workday will include quilting basics demonstrated by Beth Twedell. Scheduled for February is Harriett Whitlock teaching how to make pincushions. If you want her to supply the foam needed please contact her. Cost for foam is \$5.00.

**Block of the Month:** Lorene Arnette. 20 blocks were turned in this month. Wanda Moody won the blocks. February block is a Valentine theme. Blocks should be 12 ½ square with a cream background.

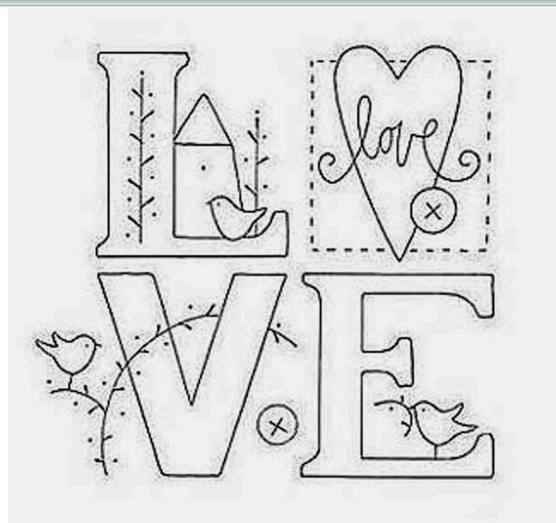
**The Chairman positions for 2017 Challenge Committee and the 2017 Opportunity Quilt Committee are still open. Please contact Frances Kelley if you can help.**

**Program:** Wanda Moody. February program will be Jennifer Amor with a trunk show of wearables and purses. March program will be Susan Edmonson with a trunk show.

Beth Twedell introduced Sandra Baker who gave a talk on crazy quilts. She will also teach a class after the meeting.

**Show and Tell:** 10 members participated.

Submitted by Elaine Holmes, Secretary



### Valentine ideas from Ulla's World

[Ulla's Quilt World](http://quiltworld2.blogspot.fi/2014/08/love-quilt-pattern-pillow.html), Finland

<http://quiltworld2.blogspot.fi/2014/08/love-quilt-pattern-pillow.html>

### February Block of the Month: Hearts

Make any block, pieced or appliqued, finished size 12 inches (unfinished 12.5 inches), using a Valentine theme and colors.



Please do not trim the block.



### Membership News

We are honored to present Lifetime Membership cards to Nancy Callahan, Doreen Copeland, Lillie Hucks, Rita Milizia and Courtney Stukes. These ladies have been members for a very long time and have contributed so much to SFQ. Thank you and join us anytime you can. Your cards have been mailed.

The 2016 Membership List will be printed and available at the February meeting. Please mail your check to Timi Bronson, 1768 Oakhill Court, Hartsville, SC 29550, no later than January 28th to be included on that list.

#### Please update your membership list with the following changes:

Jan Davis - email [jdavis5303@yahoo.com](mailto:jdavis5303@yahoo.com)

Elaine Holmes - email [rwJE005@gmail.com](mailto:rwJE005@gmail.com)

Alice Hulsey - cell #(843) 339-7129

Frances Kelley - cell #(803) 428-7045

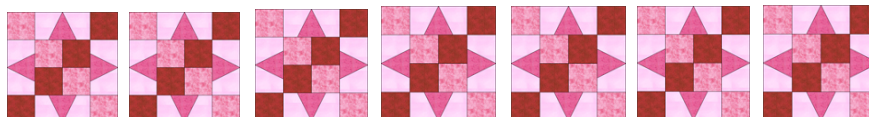
Susan Rayment - email [susanrayment@outlook.com](mailto:susanrayment@outlook.com)

#### New Members

We extend a hearty welcome to our newest members:

Dianne Adams, 3236 Hidden Lake Dr., East Jacksonville, FL 32216, phone (904) 731-4609, email [honb3@bellsouth.net](mailto:honb3@bellsouth.net)

Ann Parks, 1812 Damon Dr., Florence, SC 29505, phone (843) 621-0677, email [johnnandannp@bellsouth.net](mailto:johnnandannp@bellsouth.net)



<http://dlstewart.com/clipart.htm>

### Workday Update for January 21

Beth Twedell will begin a series of lessons and demonstrations on the **Basic Sewing Skills for Quilters**. On the 21st those interested will need to bring a rotary cutter, a cutting mat, and ruler to practice cutting skills using the rotary cutter. If time allows, she will continue with the next lesson: Getting a perfect 1/4 inch seam. For this lesson, a sewing machine and fabric will be needed.

Did you know a 3 X 5 index card has perfect quarter inch lines?

#### Tips to Consider: Maintain your machine

Remember to periodically clear any lint and oil the bobbin case of your machine. A well-maintained machine is one that will provide years and years of trouble-free sewing. One easy way to regularly take care of this routine maintenance is to clean and oil after you have emptied five bobbins (keep empty bobbins together so you know). For professional maintenance, most manufacturers recommend a regular cleaning once a year. Choose one month a year and regularly take your machine in for a "spa" day during that month each year. (Tip from Craftsby.com)



### January Recipe: Crockpot Fudge

16 oz. jar of unsalted peanuts

16 oz. jar Salted peanuts

2 one-pound packages chocolate bark (break into pieces)

12 oz. bag Nestle Milk Chocolate Chips

Turn crockpot on low.

Place ingredients into crockpot, in order listed – DO NOT STIR.

Cook on low for three hours.

Spread out large sheets of wax paper (on cookie sheets or table top).

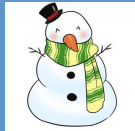
Turn off pot and then stir with a large heavy wooden spoon, until thoroughly mixed.

(WORK QUICKLY) Spread on wax paper by teaspoons (or tablespoons – depending on how large you want your pieces to be)

Let sit one hour – or until set. Store in airtight containers (looks pretty to serve in cupcake paper holders – especially holiday or metallic ones).

-- **Makes a lot of candy**

Courtesy of Lorene Arnette



### Snow Man Mug Rug Tutorial

Materials for one mug rug (approximately 9" square when finished):

- 1 - 6" square white fabric
- 4 - 2" squares red or green fabric
- 2 - 2" x 6" strips red or green fabric
- 2 - 2" x 9" strips red or green fabric
- Small scrap of orange fabric for nose and Heat n' Bond
- 1 - 11" square of quilt batting
- 1 - 12" square of backing fabric
- 1 - 2 1/4" x WOF strip fabric for binding
- 2 small, flat black buttons for eyes



- The illustrated directions are on the website.

<http://plainjane21.blogspot.com/2011/11/snowman-mug-rug-tutorial.html>

### \*\*\*\*\* February Workday: Cube Pincushion, Pincushion/ trash bag, Wool pincushion \*\*\*\*\*

**Materials for the cube pincushion:** 1 fat quarter or the equivalent in a mixture of colors to be cut into 1 rectangle 4.5 X 4.5 and 4 rectangles 4.5 X 6.5; small pieces of rickrack and elastic and bits of fabric to make 2 or 3 pockets for the side; 1 large button with 2 or 4 holes.; extra straight pins with small heads; glue (I use the 6000 glue in the tube). The foam is \$5 or you can bring your own 4-inch square of foam rubber.

**Materials for the pincushion/trash bag:** 1/2 yd. fabric; 1/4 yd. contrast fabric; 4.25 X 4.25 ceramic tile; 6 X 10 in. rectangle fabric for holding filler; 1/2 yd. boning; filler for pincushion; gripper fabric for bottom of pincushion (optional).

**Materials for wool pincushion:** about 80 inches of felted wool 4 inches wide; button; perle cotton or DMC floss.

